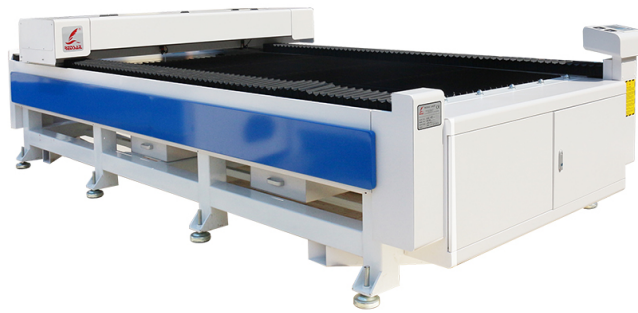


# THE ULTIMATE GUIDE TO CHOOSING THE BEST DIODE LASER ENGRAVER OF 2023

*Posted on 2023-10-16 by redsail*



**Category:** [Laser Engraver News](#)

**Tag:** [best diode laser engraver 2023](#)



# THE ULTIMATE GUIDE TO CHOOSING THE BEST DIODE LASER ENGRAVER OF 2023

The diode laser engraver is a powerful tool for creating intricate designs and patterns on a variety of materials. It is a versatile tool that can be used for a variety of applications, from engraving wood and metal to creating intricate designs on glass and plastic. With the right diode laser engraver, you can create beautiful and unique designs that will last for years to come.

In this guide, we will discuss the different types of diode laser engravers available, the features to look for when choosing the best diode laser engraver, and the benefits of using a diode laser engraver. We will also provide some tips on how to get the most out of your diode laser engraver.

## Types of Diode Laser Engravers

There are several types of diode laser engravers available on the market today. The most common type is the CO2 laser engraver, which uses a carbon dioxide laser to create intricate designs on a variety of materials. This type of engraver is typically used for engraving wood, metal, glass, and plastic.

Another type of diode laser engraver is the fiber laser engraver. This type of engraver uses a fiber laser to create intricate designs on a variety of materials. This type of engraver is typically used for engraving metal, glass, and plastic.

The third type of diode laser engraver is the UV laser engraver. This type of engraver uses a UV laser to create intricate designs on a variety of materials. This type of engraver is typically used for engraving glass, plastic, and metal.

## Features to Look for When Choosing the Best Diode Laser Engraver

When choosing the best diode laser engraver, there are several features to consider. The first feature to consider is the power of the laser. The higher the power of the laser, the more intricate designs it can create.

The second feature to consider is the size of the engraver. The larger the engraver, the more intricate designs it can create. The third feature to consider is the speed of the engraver. The faster the engraver, the more intricate designs it can create.

The fourth feature to consider is the accuracy of the engraver. The more accurate the engraver, the more intricate designs it can create. The fifth feature to consider is the software that comes with the engraver. The better the software, the more intricate designs it can create.

## **Benefits of Using a Diode Laser Engraver**

There are several benefits to using a diode laser engraver. The first benefit is that it is a versatile tool that can be used for a variety of applications. The second benefit is that it is a powerful tool that can create intricate designs on a variety of materials. The third benefit is that it is a cost-effective tool that can save you money in the long run.

The fourth benefit is that it is a safe tool that can be used without the risk of injury. The fifth benefit is that it is a fast tool that can create intricate designs quickly. The sixth benefit is that it is a precise tool that can create intricate designs with accuracy.

## **Tips for Getting the Most Out of Your Diode Laser Engraver**

When using a diode laser engraver, there are several tips to keep in mind to get the most out of your engraver. The first tip is to make sure that you are using the correct type of laser for the material you are engraving. The second tip is to make sure that you are using the correct settings for the material you are engraving. The third tip is to make sure that you are using the correct software for the material you are engraving.

The fourth tip is to make sure that you are using the correct safety equipment when using the engraver. The fifth tip is to make sure that you are using the correct maintenance procedures for the engraver. The sixth tip is to make sure that you are using the correct accessories for the engraver.

## **FAQs**

### **What is a diode laser engraver?**

A diode laser engraver is a powerful tool for creating intricate designs and patterns on a variety of materials. It is a versatile tool that can be used for a variety of applications, from engraving wood and metal to creating intricate designs on glass and plastic.

### **What are the different types of diode laser engravers?**

The most common types of diode laser engravers are the CO2 laser engraver, the fiber laser engraver, and the UV laser engraver.

### **What features should I look for when choosing the best diode laser**

## **engraver?**

When choosing the best diode laser engraver, you should consider the power of the laser, the size of the engraver, the speed of the engraver, the accuracy of the engraver, and the software that comes with the engraver.

## **What are the benefits of using a diode laser engraver?**

The benefits of using a diode laser engraver include that it is a versatile tool that can be used for a variety of applications, it is a powerful tool that can create intricate designs on a variety of materials, it is a cost-effective tool that can save you money in the long run, it is a safe tool that can be used without the risk of injury, it is a fast tool that can create intricate designs quickly, and it is a precise tool that can create intricate designs with accuracy.