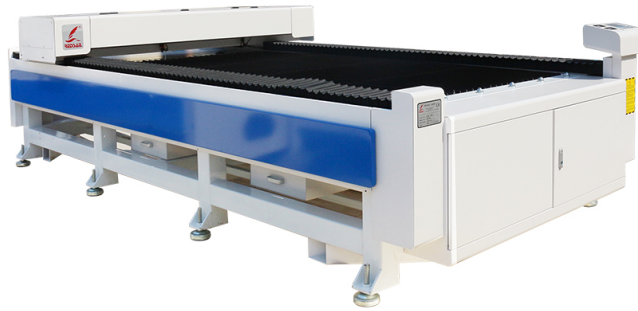


# WHAT ARE THE TOP SOFTWARE OPTIONS FOR MAXIMIZING YOUR ORTUR LASER ENGRAVER'S POTENTIAL?

*Posted on 2024-03-28 by redsail*



Category: [Laser Engraver News](#)



# WHAT ARE THE TOP SOFTWARE OPTIONS FOR MAXIMIZING YOUR ORTUR LASER ENGRAVER'S POTENTIAL?

If you own an Ortur Laser Engraver, you're already aware of its incredible capabilities and versatility. However, to truly unlock its full potential and achieve breathtaking engraving results, it's crucial to have the right software at your disposal. In this article, we'll explore some of the top software options available for maximizing your Ortur Laser Engraver's potential.

## 1. LightBurn

**LightBurn** is a powerful software option that provides a comprehensive and user-friendly interface for managing your Ortur Laser Engraver. It offers a wide range of features, including:

- **Intuitive design tools:** LightBurn allows you to create and edit designs with ease. You can import images, vectors, and even work with text to design personalized engravings.
- **Advanced control options:** This software offers precise control over your engraver's settings, including power, speed, and focal point adjustments. You can also set up custom presets for different materials or engraving techniques.
- **Camera support:** LightBurn supports a built-in camera feature that enables you to easily align your engravings on different materials, ensuring accurate and precise results.
- **Compatibility:** LightBurn is compatible with most Ortur Laser Engraver models, making it a seamless fit for your engraving needs.

LightBurn is available for both Windows and macOS systems, ensuring accessibility regardless of your preferred operating platform.

## 2. LaserGRBL

If you're seeking a free and open-source software option, **LaserGRBL** is an excellent choice. This software offers a range of features that cater to both novice and experienced users:

- **Straightforward interface:** LaserGRBL has a user-friendly interface that simplifies the engraving process. Even if you're new to laser engraving, you'll find navigating and using this software to be intuitive.
- **Flexible engraving options:** With LaserGRBL, you have control over line width, depth, and speed. This allows you to experiment with different engraving styles and techniques to deliver stunning results.

- **G-code support:** The software accepts G-code files, providing compatibility with various design software and file formats. You can import designs from popular graphic design tools such as Adobe Illustrator or CorelDRAW.
- **Real-time 3D preview:** LaserGRBL offers a real-time 3D preview feature that allows you to visualize your engraving before sending it to the Ortur Laser Engraver. This helps you make any necessary adjustments and ensures optimal outcomes.

LaserGRBL is compatible with Windows operating systems and can be easily downloaded and installed from its official website.

### 3. Inkscape

If you prefer to work with vector-based designs, **Inkscape** is an excellent choice for preparing your artwork for the Ortur Laser Engraver:

- **Vector graphics editing:** Inkscape is an open-source software that allows you to create and manipulate vector graphics. You can draw, trace, and import scalable designs to meet your engraving needs.
  - **Advanced features:** Inkscape offers advanced features such as path editing, node manipulation, and object transformations. These tools enable you to fine-tune your designs and achieve high-quality engravings.
- **File compatibility:** Inkscape provides compatibility with various file formats, including SVG (Scalable Vector Graphics) – the format commonly used for laser engraving.
- **Extensive community support:** Inkscape has a dedicated community of users who regularly contribute tutorials, add-ons, and support. This ensures helpful resources are readily available when you encounter any challenges.

Inkscape is compatible with Windows, macOS, and Linux, making it a versatile software option for users across different operating systems.

## Frequently Asked Questions (FAQs)

### 1. Can I use Ortur Laser Engraver with other design software?

Yes, Ortur Laser Engravers are compatible with various design software options. However, it's important to ensure that your chosen software can export designs in a format supported by your engraver.

## **2. Are there any software options specifically designed for photo engraving?**

Yes, many software options offer advanced photo engraving capabilities. LightBurn, for example, provides precise control over power modulation, allowing you to achieve detailed and realistic photo engravings.

## **3. Can I control my Ortur Laser Engraver wirelessly through software?**

Yes, some software programs offer wireless control options. LightBurn, for instance, supports wireless communication, allowing you to control your engraver remotely.

In conclusion, selecting the right software for your Ortur Laser Engraver is essential for maximizing its potential. Whether you prefer the comprehensive features of LightBurn, the simplicity of LaserGRBL, or the vector-based design capabilities of Inkscape, these software options offer powerful tools to enhance your engraving experience and achieve outstanding results.