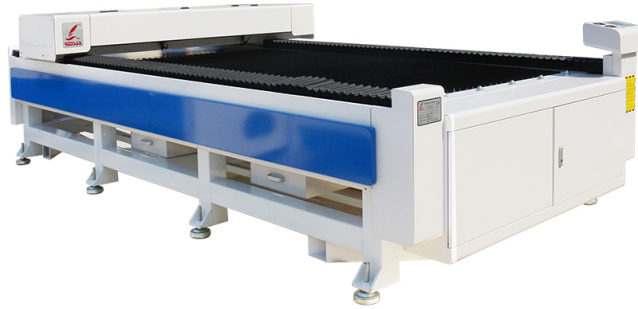


WHAT CAN A WOOD CO2 LASER CUTTER DO?

Posted on 2023-10-19 by redsail



Category: [Laser Cutter News](#)



WHAT CAN A WOOD CO2 LASER CUTTER DO?

Wood CO2 laser cutters are incredibly versatile tools that offer precise cutting and engraving capabilities for various wood types and thicknesses. These machines utilize a high-powered laser beam to cut or etch intricate designs on wood surfaces. Whether you're a hobbyist, artist, or professional, a wood CO2 laser cutter can provide numerous benefits and open up endless creative possibilities. Let's explore some of the remarkable things that a wood CO2 laser cutter can do.

1. Intricate Wood Cutting

With a wood CO2 laser cutter, you can achieve high precision and intricate cuts on wood. Whether you want to create detailed wooden jigsaw puzzles, decorative wooden ornaments, or complex shapes and patterns, these machines can deliver outstanding results. The laser beam effortlessly cuts through the wood, producing smooth edges with minimal charring.

2. Personalized Engravings

A wood CO2 laser cutter allows you to personalize wooden objects with engravings. Whether you want to add a customized message to a wooden plaque, engrave a family name on a cutting board, or create unique patterns on furniture, a laser cutter can bring your ideas to life. The laser beam precisely etches the wood, leaving behind intricate, permanent engravings.

3. Prototyping and Model Making

If you're into woodworking or model making, a wood CO2 laser cutter can greatly enhance your projects. These machines enable you to create precise prototypes or miniatures with intricate details. Whether you're constructing architectural models, designing miniature furniture, or building scale models of vehicles, a laser cutter can help you achieve precise and intricate cuts every time.

4. Jewelry and Craft Making

Wood CO2 laser cutters are also highly effective for jewelry and craft making. You can create unique wooden jewelry pieces, such as earrings, pendants, and bracelets, with intricate designs and personalized engravings. Additionally, you can use a laser cutter to produce decorative elements for craft projects, like wooden embellishments for scrapbooking or intricate wooden motifs for home decor.

5. Artistic Creations

Artists and craftsmen appreciate the artistic possibilities offered by wood CO2 laser cutters. These machines allow you to create stunning art pieces from wood. You can craft intricate wooden sculptures, wall art, and decorative panels with ease. The precision and versatility of a laser cutter make it an excellent tool for artists to experiment with different mediums and create unique artwork.

Frequently Asked Questions (FAQs)

Q1. Can a wood CO2 laser cutter cut through thick wood?

Yes, wood CO2 laser cutters can cut through different thicknesses of wood. The cutting ability depends on the power of the laser cutter. Higher-powered machines can cut through thicker wood, while lower-powered models are suitable for thinner materials. It's important to choose a laser cutter with appropriate power based on your intended cutting needs.

Q2. Is it safe to use a wood CO2 laser cutter?

Wood CO2 laser cutters are generally safe to use if you follow proper safety guidelines. It's crucial to wear appropriate protective eyewear to shield your eyes from the laser beam. Additionally, ensure proper ventilation in your workspace to evacuate any smoke or fumes generated during the cutting or engraving process.

Q3. Can I create my own designs for cutting and engraving?

Yes, you can create custom designs for cutting and engraving with the help of specialized software. Most wood CO2 laser cutters are compatible with vector-based design software, such as Adobe Illustrator or CorelDRAW. You can create or import your own designs, adjust settings like cutting depth or engraving speed, and then send the design to the laser cutter for execution.

Q4. What types of wood are suitable for laser cutting?

Various wood types can be used with a laser cutter. However, some woods, such as plywood or MDF (medium-density fiberboard), are particularly popular due to their consistent texture and ease of cutting. Hardwoods like maple or cherry can also be used but may require more power and slower cutting speeds. It's always advisable to conduct material tests and experiment with different wood types to achieve the desired results.

Q5. Can a wood CO2 laser cutter be used for materials other than wood?

Yes, wood CO2 laser cutters can also be used to cut and engrave other materials, such as acrylic, leather, fabric, rubber, and certain plastics. The versatility of these machines allows you to work with a wide range of materials, expanding your creative possibilities beyond woodwork.

Wood CO2 laser cutters offer an array of opportunities for woodworkers, artists, and enthusiasts. From intricate wood cutting and personalized engravings to model making and craft creations, these machines combine precision and versatility. Whether you're pursuing a hobby or running a business, a wood CO2 laser cutter can be a valuable tool to unleash your creativity and bring your ideas to life.