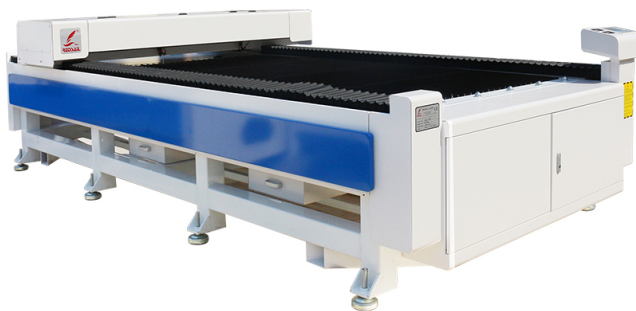


# WHAT TO CONSIDER WHEN SEARCHING FOR THE BEST LASER WOOD CUTTER AND ENGRAVER

*Posted on 2023-10-18 by redsail*



Category: [Laser Cutter News](#)



# What to Consider When Searching for the Best Laser Wood Cutter and Engraver

## Introduction:

Laser wood cutting and engraving have emerged as versatile technologies, revolutionizing the woodworking industry. These machines offer precision, speed, and the ability to create intricate designs on various materials. Whether you are a hobbyist or a professional woodworker, investing in the best laser wood cutter and engraver can enhance your craft and open up a whole new world of possibilities. However, with numerous options available in the market, choosing the right machine can be overwhelming. In this article, we will discuss the key factors to consider when searching for the best laser wood cutter and engraver to help you make an informed decision.

## Factors to Consider:

### 1. Laser Power and Precision:

The laser power determines the cutting and engraving capabilities of the machine. Higher wattage lasers can cut through thicker materials, while lower wattage lasers are suitable for engraving and etching. Consider the specific requirements of your projects and choose a laser power that aligns with those needs. Precision is equally important, as intricate designs require high accuracy. Look for a laser wood cutter and engraver that offers excellent precision, ensuring that your creative vision is accurately translated into the finished product.

### 2. Workspace and Machine Size:

Evaluate the available space in your workshop before purchasing a laser wood cutter and engraver. These machines can vary in size, and some models require additional space for ventilation and safety measures. Consider the dimensions of the machine and ensure it fits comfortably in your workshop while leaving enough space to maneuver around it. Additionally, some machines come with various bed sizes, allowing you to work on larger pieces of wood. Determine your requirements and choose a machine with an appropriate workspace size.

### 3. Software and Compatibility:

The software that comes with the laser wood cutter and engraver plays a vital role in its functionality. Look for a machine that is compatible with industry-standard design software like CorelDRAW and Adobe Illustrator. User-friendly software with a simple interface can significantly enhance your productivity and ease of use. Furthermore, check whether the machine has the ability to connect with your computer operating system to ensure seamless communication between the two.

### 4. Safety Features:

Working with lasers can be hazardous, and safety should always be a top priority. Look for a laser

wood cutter and engraver that incorporates safety features such as enclosed laser heads, emergency stop buttons, and safety interlocks. The machine should also have an integrated cooling system to prevent overheating during long hours of operation. Take the time to understand the safety features of the machine and ensure they meet your requirements to minimize the risk of accidents.

#### 5. Cost and After-sales Support:

While cost should not be the sole determining factor, it is essential to consider your budget when searching for the best laser wood cutter and engraver. Evaluate the features and specifications offered by the machine and determine its value for money. Additionally, research the company's reputation and customer reviews to assess the quality of their after-sales support. A reliable manufacturer should provide technical assistance, training, and readily available spare parts to ensure smooth operation even after your purchase.

#### FAQs:

Q: What materials can a laser wood cutter and engraver work with?

A: Laser wood cutters and engravers can work with various materials, including wood, acrylic, leather, fabric, paper, and certain plastics. However, it is essential to check the machine's specifications to ensure it is compatible with the materials you plan to work with.

Q: Can a laser wood cutter and engraver handle large projects?

A: Yes, certain laser wood cutters and engravers come with larger bed sizes and can handle large-scale projects. However, keep in mind the machine's dimensions and workspace requirements when considering its suitability for your workshop.

Q: Do I need prior experience to operate a laser wood cutter and engraver?

A: While prior experience can be beneficial, many laser wood cutters and engravers are designed to be user-friendly and come with intuitive software interfaces. Manufacturers often provide training and support to help users master the machine's operation.

Q: Can a laser wood cutter and engraver create intricate designs?

A: Yes, laser wood cutters and engravers excel in creating intricate designs and delicate patterns. With their precision and accuracy, these machines can reproduce complex designs on various materials, allowing for intricate detailing in your woodworking projects.

#### Conclusion:

Investing in the best laser wood cutter and engraver can significantly enhance your woodworking capabilities. By considering factors such as laser power, precision, workspace, software compatibility, safety features, cost, and after-sales support, you can make an informed decision when selecting a machine. Remember to thoroughly research and compare different models before making your final purchase. With the right laser wood cutter and engraver, you can unleash your

creativity and take your woodworking skills to new heights.